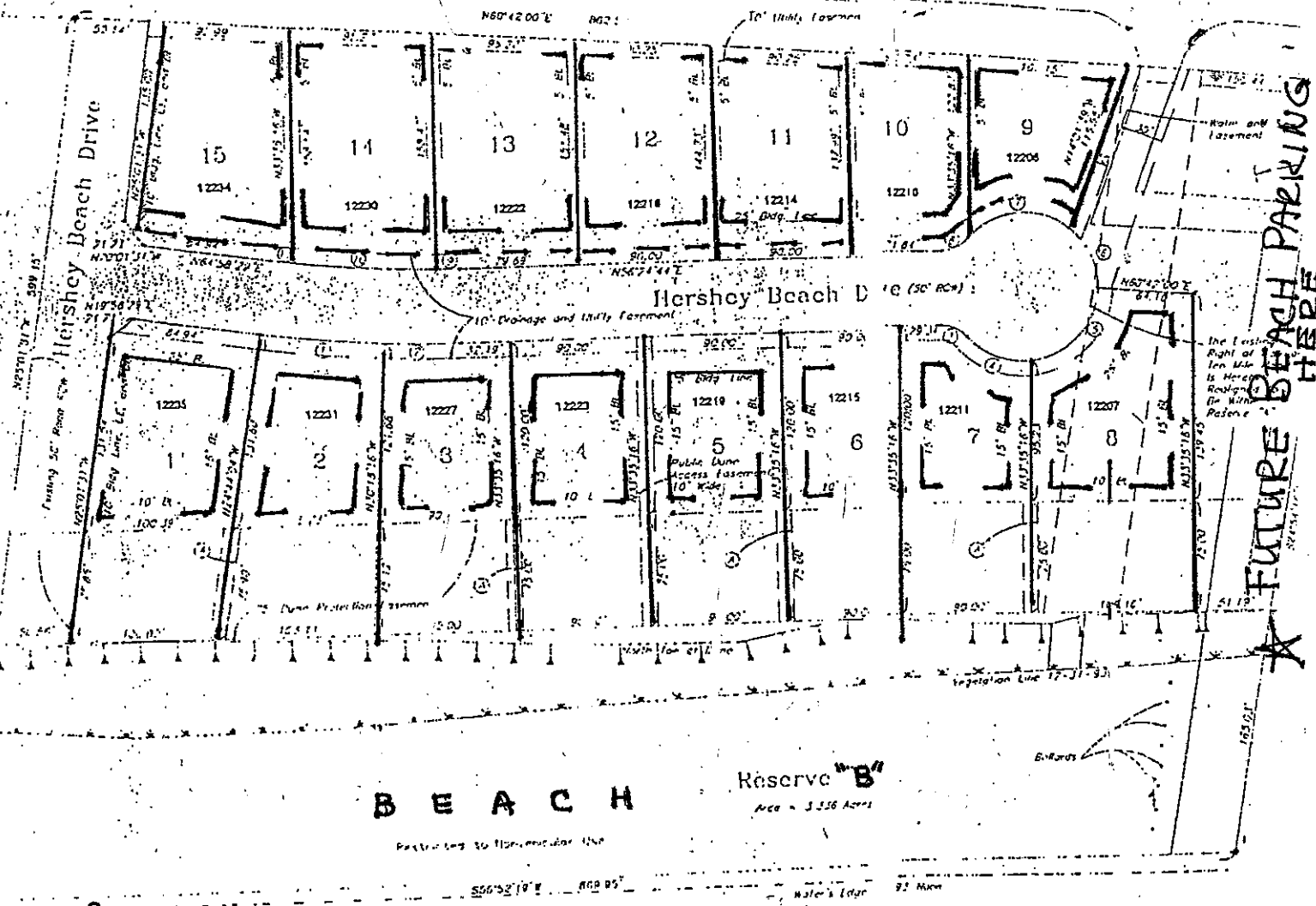


# HERSHEY BEACH

1/4 ACRES (200' 100')



## BEACH

Reserve "B"  
Area = 3.556 Acres

Restricting to Non-residential Use

- lots 4, 5, & 6 are 90x195
- lot 1 = 100x207x84x94x21
- lot 2 = 103x196x82x207
- lot 3 = 95x195x32x51x196

City of Galveston Planning Commission Approval  
This Ordinance is the City and County of Galveston, Texas, passed 948-50  
to set back in the above plat with approval by the Galveston  
Planning Commission this ... 1995

RECORD INFORMATION  
114 5141  
COUNTY  
1 Jessie  
certified to  
Record a  
Map Book  
Map Number  
at office of Galveston, Galveston County,  
Texas

Walt Stuart  
Surveyor  
1100 ...  
Galveston, Texas

Jesse G. ...  
County Clerk  
Galveston County, Texas  
By ... Deputy